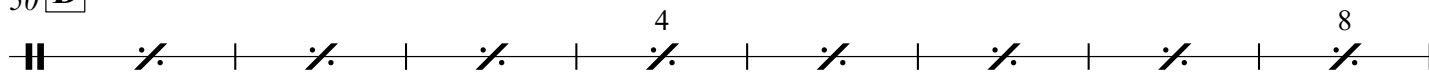


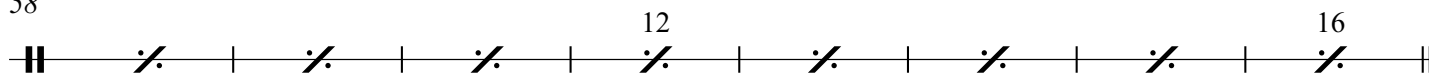
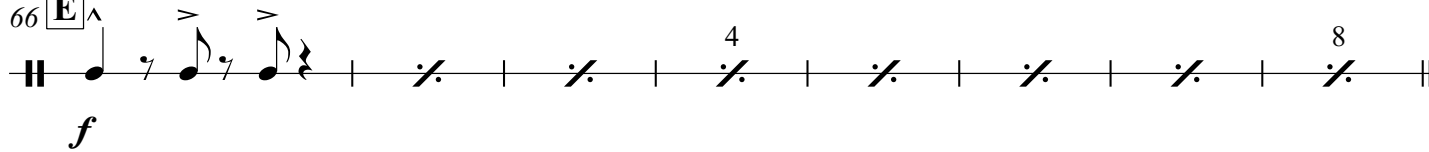
[illegible]

Example 18 is a musical score for a single staff. It begins with a double bar line and a measure containing a quarter note, a quarter rest, and a quarter note. This is followed by a measure with a quarter note, a quarter rest, and a quarter note. The next measure contains a quarter note, a quarter rest, and a quarter note. The following measure contains a quarter note, a quarter rest, and a quarter note. The next measure contains a quarter note, a quarter rest, and a quarter note. The following measure contains a quarter note, a quarter rest, and a quarter note. The next measure contains a quarter note, a quarter rest, and a quarter note. The following measure contains a quarter note, a quarter rest, and a quarter note. The next measure contains a quarter note, a quarter rest, and a quarter note. The final measure contains a quarter note, a quarter rest, and a quarter note. The score is labeled with the number 18 in the top left corner.

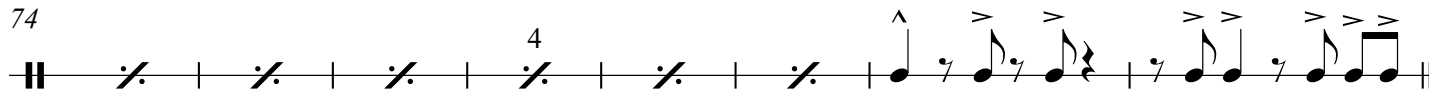
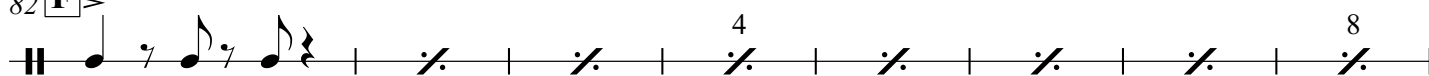
34 C

50 **D**

58

66 **E**

74

82 **F**

90

